

■ H.264 Embedded DVR KE-8000MX (Open price)

KEY FEATURE



- O/S : Embedded Linux
- Audio : G723.1
- Internal Bay :
 - 4 x STAT HDDs or
 - 3 x SATA HDDs & 1 x DVD-Burner
- Built-in 4/8 Ch Video Loop-Out (16Ch : Optional)
- 3 Main Monitors (Composite, S-VHS & VGA) & 1 Spot Monitor(Composite)
- 4/8/16 Alarm Input & 4 Alarm Output
- Power : D/C 12V, 5~7A
- Dimension(WxHxD) : 420 x 88 x 428 mm
- Cerification : CE,FCC,MIC,WEEE & RoHS

FEATURE

■ Compression Algorithm

Video Compression

DVR-dedicated H.264 compression chip for H/W compression.

No more comparison with MPEG4 or H.263.

* 60~70% of file size than MPEG4

Audio Compression

World best G.723.1 audio compression algorithm.

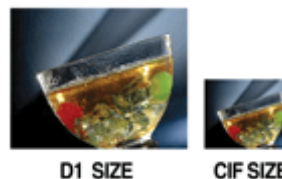
* The best bit rate than any others : 6.3 kbps

Precise synchronization of video and audio on both local and remote playback.

Image Quality

Crystal-like real-time recording up to D1 resolution.

De-interlaced feature at D1 resolution without any ghost residue.



■ Real-Time Networking

Real-Time Transmission

DVR can transmit distortion-free images at real-time speed under all resolution mode over network.

Dual-Stream Function

DVR simultaneously generates dual-stream images with adjustable fps and resolution (one for recording & the other for network transmission) for effective control of recording image quality and network traffic.

Bandwidth Control Function

DVR can control the data volume transmitted over network ranging from 25 kbps up to 100 kbps. This function is effective especially under narrow bandwidth network situation or when user wants to refine "network bandwidth occupied by video transmission" to a certain level.



Remote Management

Integrated Network Solution

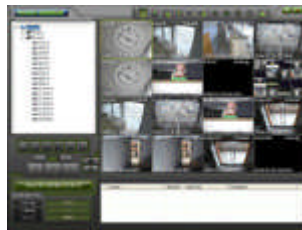
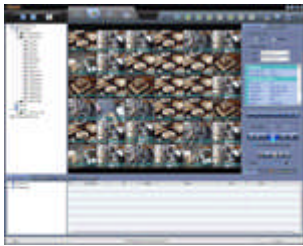
Enterprise-level central management solution (CMS & RMS Software) guarantees unlimited scalability and control for all STL products such as DVR and IP camera over network.

Mobile Viewer up to Market Trend

STL provides versatile mobile monitoring features. Under WAP Connection mode, user can connect to DVR by any kinds of mobile phone (2G & 3G) without installing any software on the phone. Smart phone connection through Wi-Fi or 3G is available for Windows Mobile O/S phone & Black Berry & iPhone, too.

Scheduled Remote Backup

User can remotely backup the massive volume of data according to scheduled program at CMS software. Especially when the sensor is triggered, the system makes instant network connection and starts data backup.



System Stability

Premium Hardware Design

Premium H/W platform with powerful CPU (up to 1.5 GHz) will lead user to enjoy unbeatable system performance and stability.

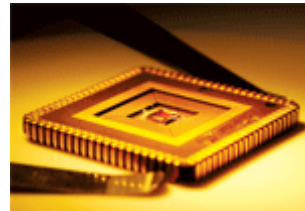
System Recovery

System will be automatically rebooted by watchdog function under abnormal situation. Besides, user can remotely reboot the system through M/S IE.

System HDD Health Check

DVR constantly check the system status, and generates warning message and alarm sound if any abnormal situation is found.

Especially for HDD status, user can get the full information such as “capacity, bad sector ratio, life time (used period) and temperature” for instant action to prevent any loss of recorded image.



SPECIFICATION

MODEL		KE-8004MX(4Ch)	KE-8008MX(8Ch)	KE-8016MX(16Ch)
Compression Algorithm		Video:H.264,Audio:G723.1		
HDD Bay		4 x STAT HDDs or 3 x SATA HDDs & 1 x DVD-Burner		
Operating System		Embedded Linux		
Video	Input	4Ch	8Ch	16Ch
	Loop-Out	4Ch(Built-in)	8Ch(Built-in)	16Ch(Built-in)
Video Mode		NTSC / PAL Selectable		
Display Speed (NTSC/PAL)		120/100 fps	240/200 fps	480/400 fps
Screen Mode for Live Display		1,4 & PIP	1,4,9 & PIP	1,4,9,16 & PIP
Video-Out	Monitor VGA Resolution	2xMain Monitor(Composite,VGA)&1xSpot Monitor(Composite) VGA Resolution:640x480,800x600,1024x768 & 1280x1024(Selectable)		
Recording Speed (NTSC / PAL)	352x240/288(CIF)	120/100 fps	240/200 fps	240/200 fps
	750x240/288(2CIF)	120/100 fps	120/100 fps	120/100 fps
	750x480/576(D1)	60/50 fps	60/50 fps	60/50 fps
Recording Resolution		NTSC : 352x240,720x240,720x480, PAL : 352x288,720x288,720x576		
Recording Modes		Continuous,Scheduled,Sensor-Activated & Motion Detection Recording Pre & Post Alarm Recording, Emergency Recording		
Playback & Search	Speed	x1, x2, x4, x8, x16, x32		
	Function	1, 4, 9 & 16 Ch(Multi-Channel Playback) Intelli-Search by Time Bar, Calendar(Date & Time) and Event/System Seaech		
Audio Input / Output		4 Ch Input / 1 Ch Output		
Alarm Input / Relay Output		4 Ch / 4Ch	8Ch / 4Ch	16Ch / 4Ch
P/T/Z Control and Port		Virtual Joy-Stick Control on screen by mouse Pan/Tilt/Zoom/Focus/Iris, RS-485 x2(RX x1, TX x1)		
LAN		10/100 Base-Tx Ethernet(RJ45)-Fixed IP, DHCP & DDNS, bandwidth limit		
Network Transmission	Function	Video Dual-Stream(Local recording & Network Transmission) Live Monitoring,Remote Playback & File Backup(Triplex-on-Remote) Remote & E-Mail Notification, Remote System Reboot by IE		
Remote PTZ Control		Pan/Tilt/Zoom/Focus/Iris		
Remote Management	Software	RMS (RemoteManager S/W) & CMS (CenralManager S/W)		
	Web (IE)	Live Monitoring, Playback & System Configuration		
	Mobile (MMS)	iPhone, BlackBerry, Windows Mobile and WAP		
Backup Device	Internal	ODD Burner (Option)		
	External	Local Backup by USB Memory Stick and Network Backup by CMS, RMS External USB ODD		
System Rcovery after Power Failure		Auto-Reboot and Journaling File System		
Advanced Functions		Multi-Language, System Upgrade by USB & Network Configuration Import & Export, Water-Mark, S.M.A.R.T Warning Alarm for System Over-Temperature		
System Operation		Front Button, IR Remote Controller, USB Mouse, Keyboard controller		
Power		12V x 5A D/C		12V x 7A D/C
Storage Temperature and Humidity		-20~60 C / 20~95% RH		
Operating Temperature and Humidity		5~40 C / 20~80% RH		
Dimension (WxDxH)		420 x 428 x 88 mm		
Certification		CE & FCC & MIC & WEEE, RoHS		

(*)Specification is subject to change without prior notice

DIMENSION



[16Ch]



[8Ch]



[4Ch]

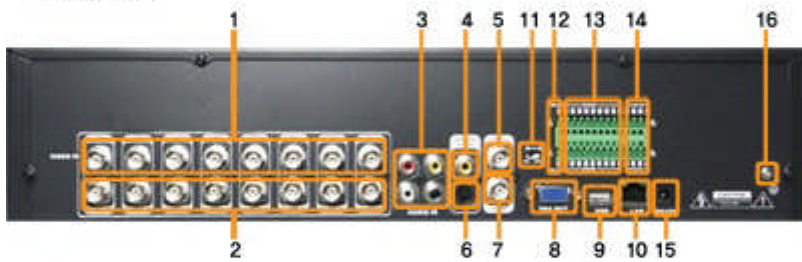


CONFIGURATION

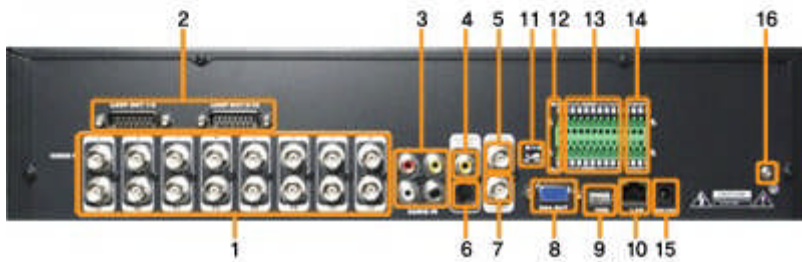
4 Ch Model



8 Ch Model



16 Ch Model



No.	Name	Description
1	Video-in	Connect camera. (Supports NTSC/PAL)
2	Video Loop-out	Loop-out of camera images
3	Audio-in	Connect the audio input device (with amplifier)
4	Audio-out	Connect the audio output device (with amplifier)
5	Video-out	Connect the CCTV monitor
6	S-Video	Connect to S-Video terminal
7	Spot-out	Connect the spot monitor
8	VGA-out	Connect the P/C(VGA) monitor
9	USB Port	USB port for mouse operation or Image backup
10	LAN Port	10/100 Ethernet connection terminal
11	NTSC/PAL Selection	Select the video signal type
12	RS-485 Port	Connect the PTZ camera and Keyboard controller
13	Sensor Input	Connect the external sensor
14	Alarm Output	Connect the external alarm device
15	Power input	Power cable connection (Default : 12 V, 5~7A)
16	Grounding Terminal	For device grounding

